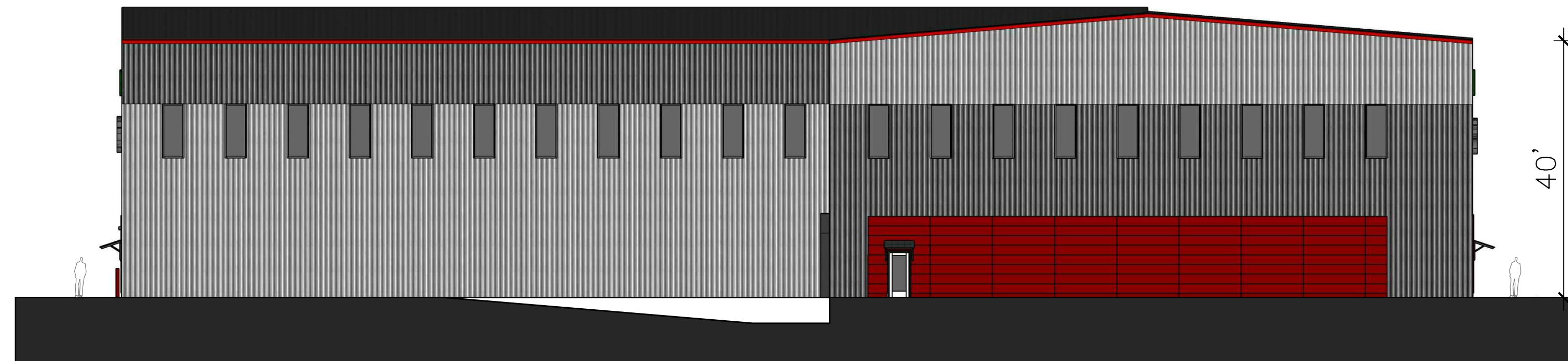


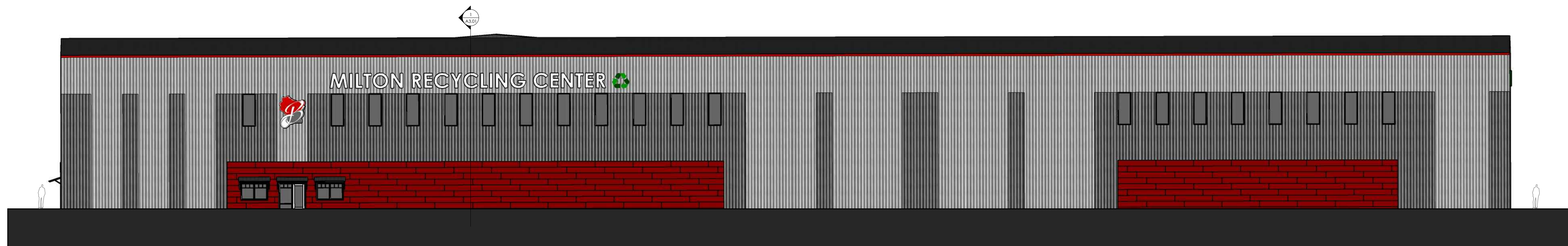
WEST ELEVATION 1/16" = 1'-0"



EAST ELEVATION 1/16" = 1'-0"



SOUTH ELEVATION 1/16" = 1'-0"



NORTH ELEVATION 1/16" = 1'-0"

KEYNOTES, DEMOLITION - ARCHITECTURAL

- 1 CLEAR ANODIZED ALUMINUM WINDOWS WITH 1" GLASS PANELS AND INTEGRATED GRILLS
GLASS COLOR - GREY
- 2 DECORATIVE 2" STEEL CANOPIES
HIGH PERFORMANCE FINISH, SILVER (TYP)
- 3 PREFINISHED ALUMINUM CAP - RUSTIC RED
- 4 OVERHEAD INSULATED GARAGE DOOR
COLOR - WHITE
- 5 PREFINISHED METAL PANEL
COLOR - CHARCOAL GRAY (TYP)
- 6 TENANT SIGNAGE BY OWNER
- 7 STEEL BOLLARDS WITH BOLLARD COLORS
COLOR - RED
- 8 PREFINISHED FIBERGLASS MAN DOOR
COLOR - WHITE
- 9 PREFINISHED CEMENT BOARD
- NICHHA - ILLUMINATION SERIES - COLOR - RED

GENERAL EXTERIOR ELEVATION NOTES:
 1. SEE GENERAL CONDITIONS FOR GENERAL INFO.
 2. SEE DEMO ELEVATION PLAN FOR SELECTIVE DEMO.
 3. SEE PROJECT SPECS THAT APPLY TO THESE NOTES.



ARCHITECTS
 700 W. VIRGINIA STREET, SUITE 604
 MILWAUKEE, WI 53204
 414.277.8000
 MADSENMAHER.COM

A NEW PROJECT FOR:

BADGERLAND DISPOSAL

PUTMAN PARKWAY
 MILTON, WI 53563



CLIENT:

HUGHES REYNOLDS GROUP LLC.
 JASON HUGHES
 #608.358.0984
 DUSTIN REYNOLDS
 #414.803.6866

Drawings and Specifications as Instruments of Service are the property of Madsen Maher Architects, whether the work for which they are made be executed or not and are not to be used or copied on other work except by written agreement with Madsen Maher Architects.

DATE	ISSUED SET
022619	PLAN COMMISSION

Project Number	17-064
Start Date	1/17/17
Drawn By	RRT
Checked By	RRT
Scale	1/16" = 1'-0"

BUILDING B
 ELEVATIONS

A2.01B